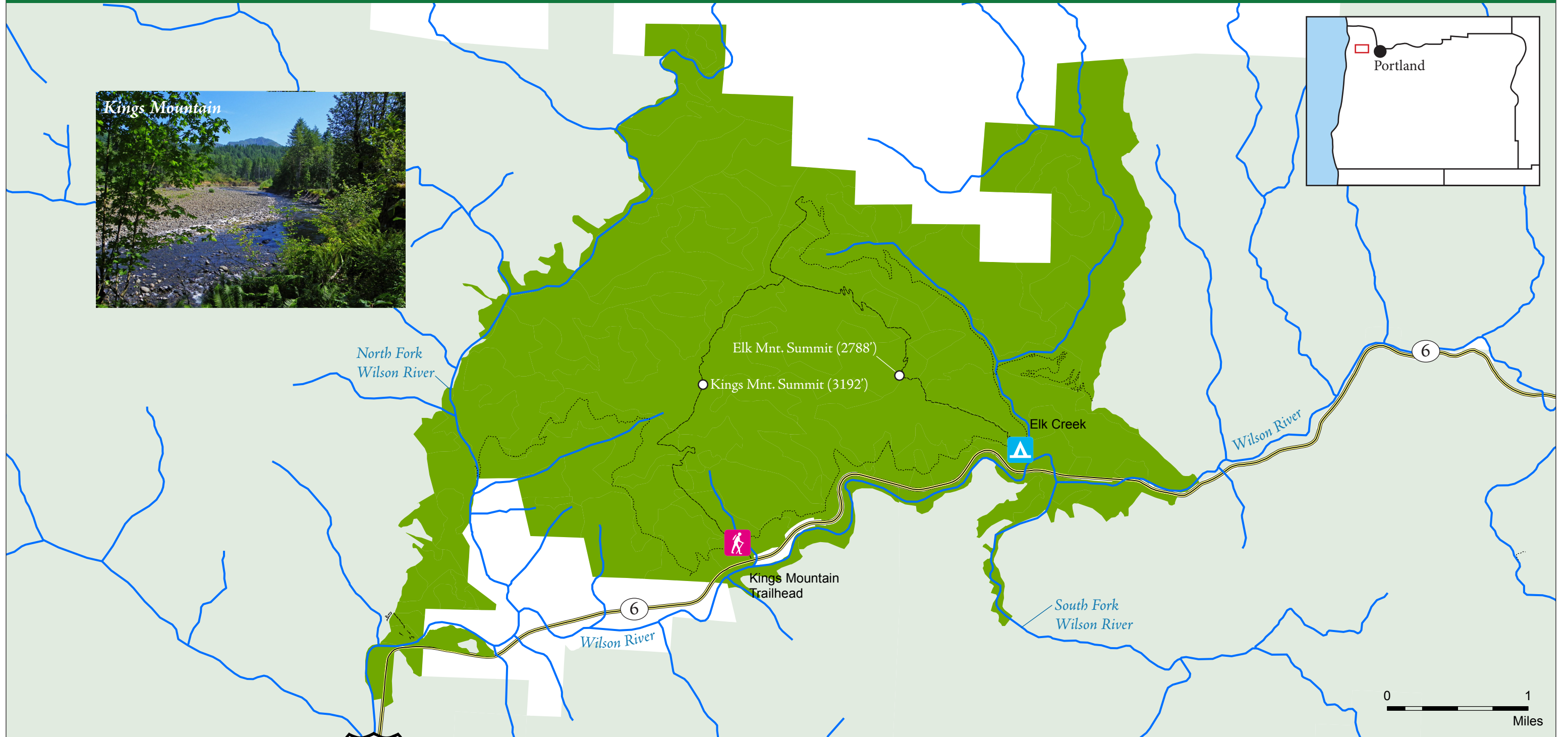


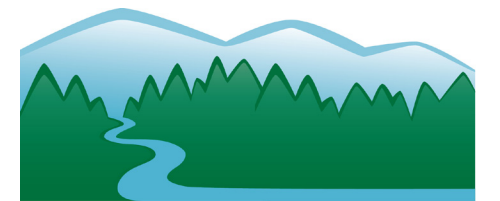
Proposed Kings Mountain Recreation and Conservation Area



- Kings Mountain Conservation Area
- Tillamook State Forest
- Highway 6
- Rivers
- Hiking
- Hiking and Mountainbiking

The **Kings Mountain Recreation and Conservation Area** is proposed for state-owned land in the Tillamook State Forest, roughly halfway between Tillamook and the Portland Metro Area. It covers 8000 acres of contiguous forest habitat with few roads and very popular hiking and biking trails.

Find out more at: ForestLegacy.org



North Coast State Forest Coalition